



**Tiffany Bozic**  
*Confiding to Strangers*

# Joshua Liner Gallery

548 W. 28th Street, 3rd Floor, New York, NY 10001  
212.244.7415 [joshualinergallery.com](http://joshualinergallery.com)

**Tiffany Bozic**  
*Confiding to Strangers*  
November 11 - December 11, 2010

Opening Reception:  
Thursday November 11, 6-9 pm

For inquiries please contact:  
[info@joshualinergallery.com](mailto:info@joshualinergallery.com)



## ***Confiding to Strangers***

Joshua Liner Gallery is pleased to present *Confiding to Strangers*, an exhibition of new paintings by the San Francisco-based artist Tiffany Bozic. This is Bozic's debut solo show at Joshua Liner Gallery.

Spanning the gallery's two exhibition areas, *Confiding to Strangers* features thirteen medium-sized works in acrylic on maple-wood panel and eighteen watercolor-on-paper works. All showcase Bozic's meticulous, realist rendering of plant and animal subjects that recasts nature as fable. "Each painting is about the intimate struggles we share with other living creatures," says Bozic. "I use examples from nature to help me describe these increasingly complex emotions, expanding my own metaphorical language. These works are small reminders that we are nature; connected to everything."

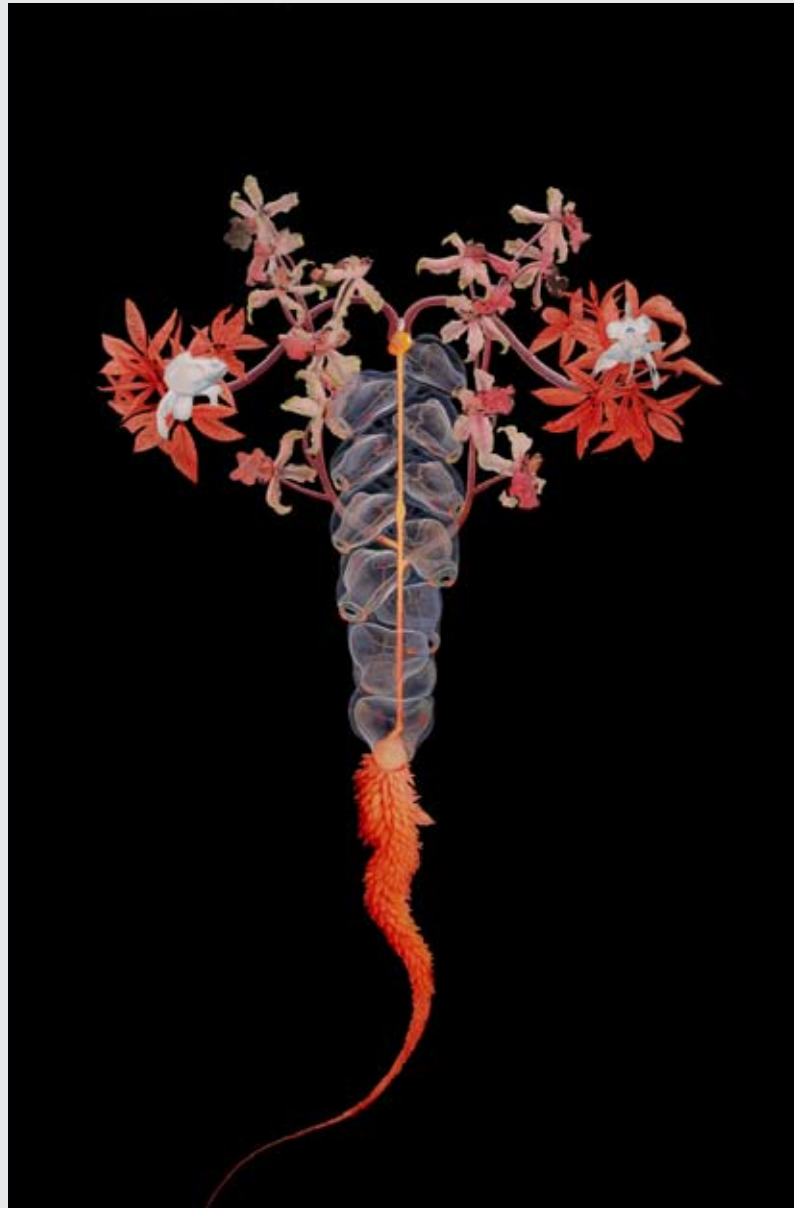
Some of these intimate connections express harmony in existence, such as the pair of sugar gliders spooning in a nest of dogwood blossoms depicted in *Oxytocin* (a witty reference to the "cuddle hormone" of breastfeeding and maternal bonding). Other works suggest life's inherent competition, such as *Eat or Be Eaten*, a tangle of frogs and bats consuming each other amid a bright bouquet of irises and gerberas. Still other works are more explicitly metaphorical though no less immediate, such as the mysterious *Under My Skin*, showing a welter of desert animals (armadillos, beetles, thorny devils) submerged below a landscape of parched earth, one lone dandelion pushing through like a hair from a follicle.

Self-taught, Bozic and her wide array of subjects are inspired by the artist's extensive travels to wild places, as well as her study of research specimens at the California Academy of Sciences in San Francisco. In her practice, Bozic has developed a complex process of masking and staining the maple panels she paints on, thus collaborating with the wood's natural grain as she builds up compositions with thin layers of acrylic. Her work has the traditional air of Flemish still-life painting or tightly rendered illustrations, displaying a highly emotional range of fabulist themes.

**Acrylic on maple panel**



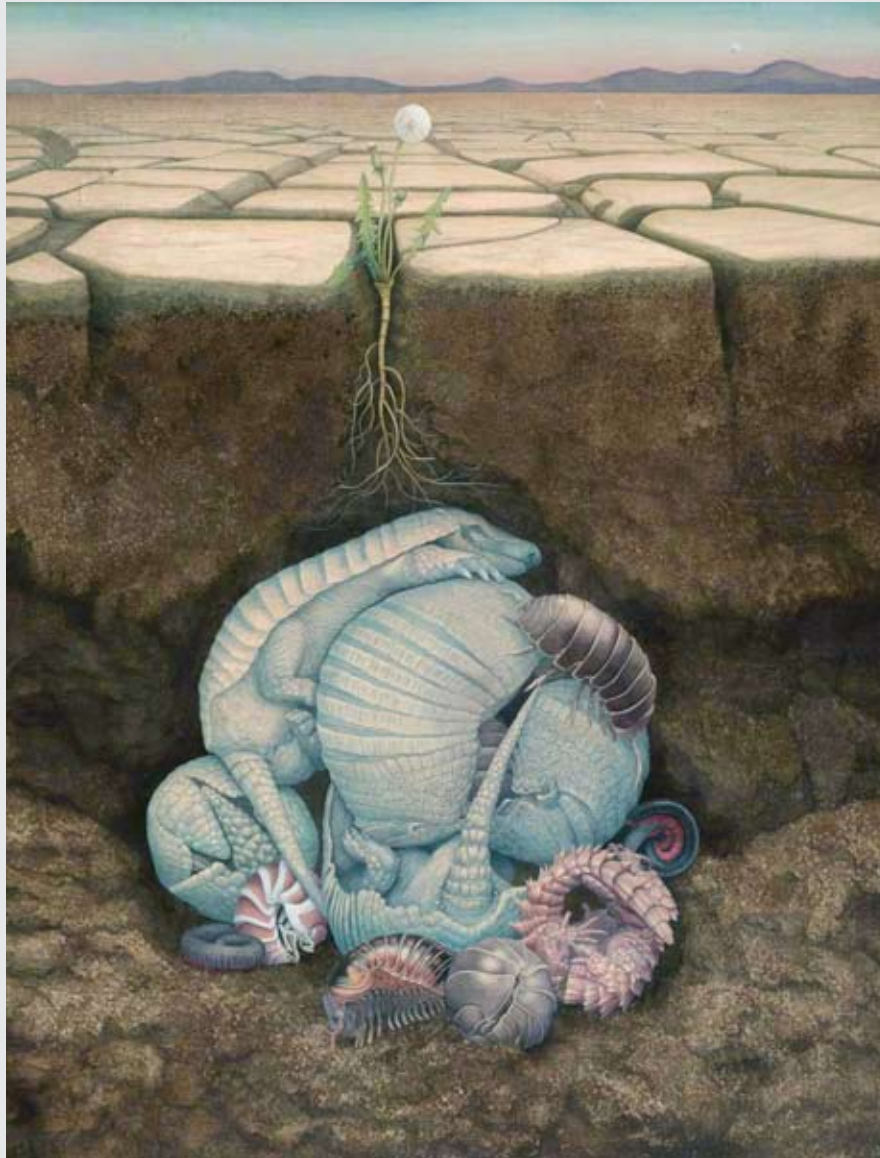
*Toxic Longing*  
Acrylic on maple panel  
49 x 32 in.  
2010



*Shaped by Reaction*  
Acrylic on maple panel  
49 x 32 in.  
2010



*White Chalk*  
Acrylic on maple panel  
45 x 35 in.  
2010



*Under My Skin*  
Acrylic on maple panel  
42 x 32 in.  
2010



*Passion in Paradise*  
Acrylic on maple panel  
46 x 30 in.  
2010



*Succubus*  
Acrylic on maple panel  
38 x 30 in.  
2010



*Common Enemy*  
Acrylic on maple panel  
29 x 37 in.  
2010



*Priceless*  
Acrylic on maple panel  
22 x 27 in.  
2010



*One of a Kind*  
Acrylic on maple panel  
24 x 24 in.  
2010



*Eat or Be Eaten*  
Acrylic on maple panel  
24 x 18 in.  
2010



*Finding Real*  
Acrylic on maple panel  
24 x 18 in.  
2010



*Oxytocin*  
Acrylic on maple panel  
18.5 x 18.5 in.  
2010



*The Rising Son*  
Acrylic on maple panel  
17 x 15 in.  
2010

**Watercolor on paper**



*Unison*  
Watercolor on paper  
24 x 18 in.  
2010



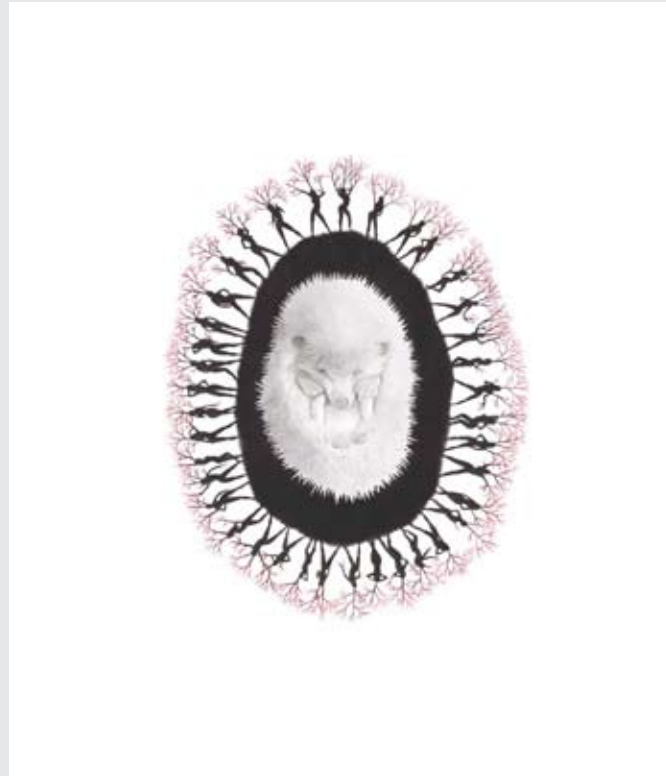
*Pressure Makes Diamonds*  
Watercolor on paper  
24 x 18 in.  
2010



*The Birds and the Bees*  
Watercolor on paper  
24 x 18 in.  
2010



*She Will Supply*  
Watercolor on paper  
24 x 18 in.  
2010



*Insecurities*  
Watercolor on paper  
24 x 18 in.  
2010



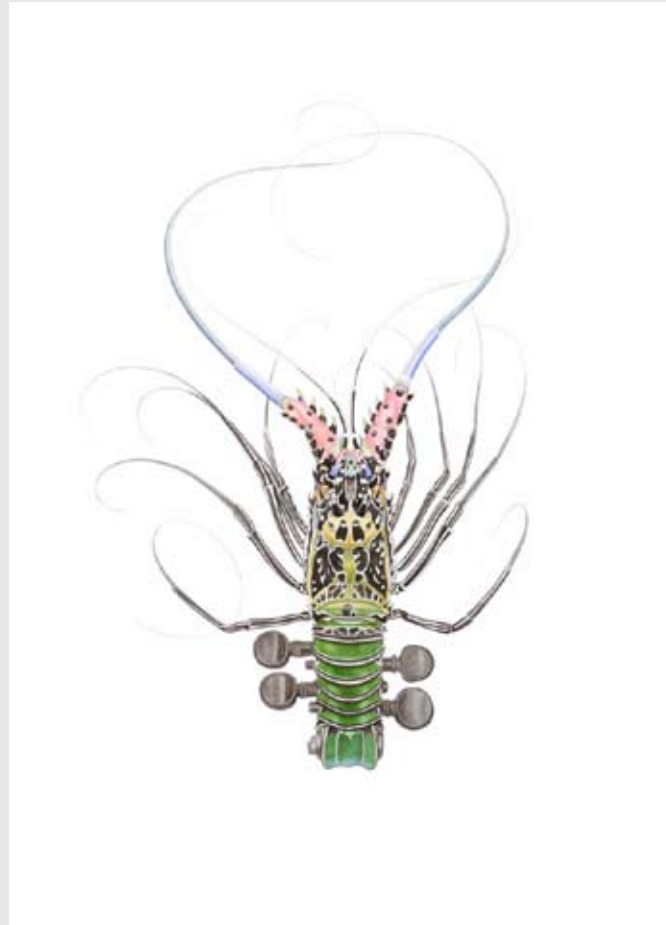
*Hidden Shapes*  
Watercolor on paper  
24 x 18 in.  
2010



*Willow*  
Watercolor on paper  
24 x 18 in.  
2010



*Waking Up*  
Watercolor on paper  
24 x 18 in.  
2010



*Violin*  
Watercolor on paper  
24 x 18 in.  
2010



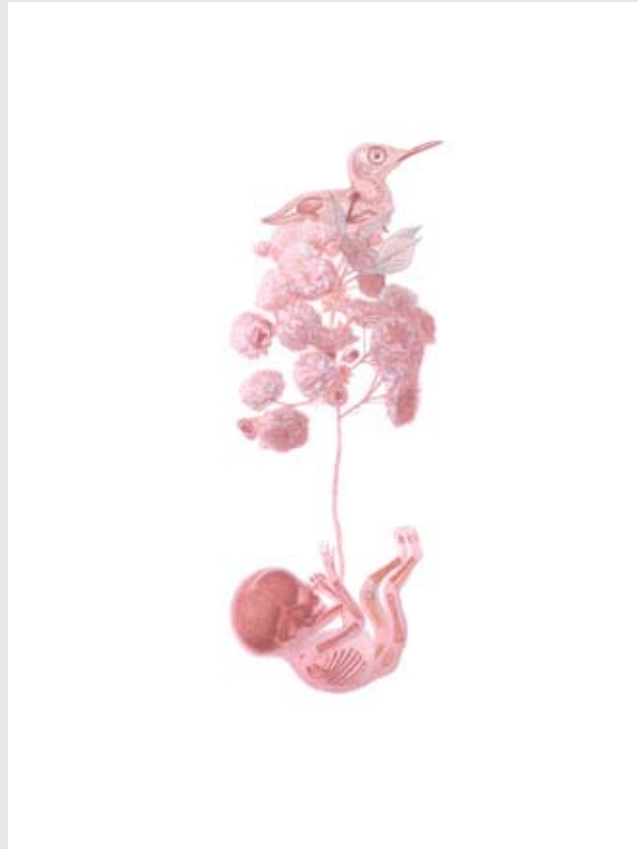
*Fading Rose*  
Watercolor on paper  
24 x 18 in.  
2010



*Ribbon*  
Watercolor on paper  
24 x 18 in.  
2010



*Momma's Boy*  
Watercolor on paper  
24 x 18 in.  
2010



*Beating Hearts*  
Watercolor on paper  
19 x 14 in.  
2010



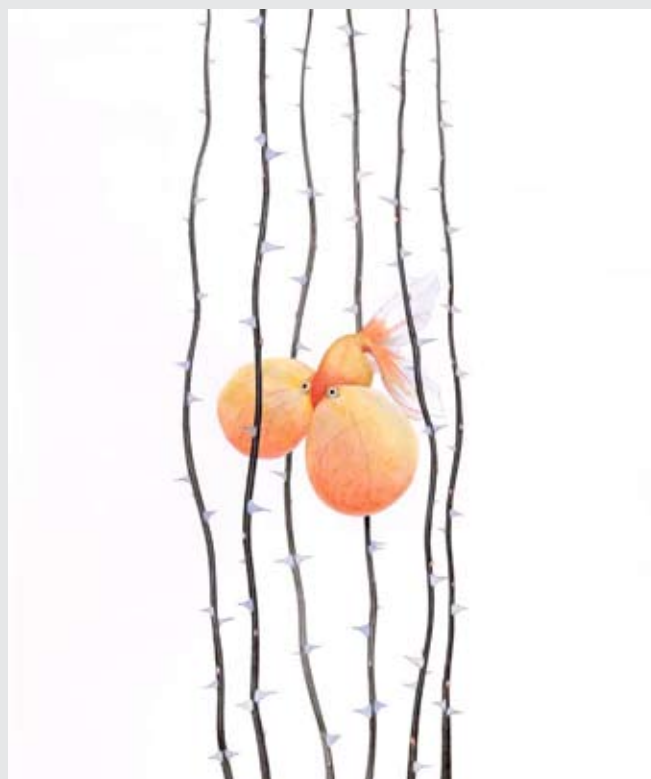
*The Engagement*  
Watercolor on paper  
19 x 14 in.  
2010



*The Way She Moves*  
Watercolor on paper  
18 x 14 in.  
2010



*Pheromones*  
Watercolor on paper  
18 x 14 in.  
2010



*Unison*  
Watercolor on paper  
16.5 x 14 in.  
2010



*A Kiss*  
Watercolor on paper  
16.5 x 13 in.  
2010

Joshua Liner Gallery